

# STRONGA



Think Efficient  
Discover the HookLoada Range



# Table of Contents



**HookLoada**  
HOOKLIFT SYSTEM





HookLoada <b>Introduction</b>	4
HookLoada <b>Concept</b>	6
HookLoada <b>Applications</b>	8
HookLoada <b>Highlights</b>	10
HookLoada <b>vs. The Other Guys</b>	12
HookLoada <b>User Reviews</b>	14
HookLoada <b>Technical Details</b>	16
HookLoada <b>Tilt-Tower Range</b>	
HookLoada <b>HL012</b>	18
HookLoada <b>HL014</b>	20
HookLoada <b>HL140</b>	22
HookLoada <b>Tele-Tower Range (Tandem Axle)</b>	
HookLoada <b>HL160</b>	24
HookLoada <b>HL180</b>	26
HookLoada <b>HL210</b>	28
HookLoada <b>HL211</b>	30
HookLoada <b>Tele-Tower Range (Tri-Axle)</b>	
HookLoada <b>HL250</b>	32
HookLoada <b>HL260</b>	34
HookLoada <b>HL300</b>	36
HookLoada <b>Optional Equipment</b>	38
Other <b>Stronga</b> Products	42

WHAT'S  
**INSIDE?**

# HookLoada Introduction







Drive The



# Revolution

## A Sound Investment

The proven range of HookLoada trailers provide supreme improvement in efficiency during ownership and operation. All machines offer superior return on investment. With great reliability, stunning performance and unparalleled resale value, low running costs are part of a major cost saving.

## Ultimate Performance. Ultimate Productivity.

Designed to meet the year-round demands of the toughest jobs, the latest HookLoada line-up offers ultimate productivity, courtesy of leading component quality, superlative versatility, efficiency, and a great selection of optional features. Exactly what you'd expect from the number 1 hook-lift manufacturer.

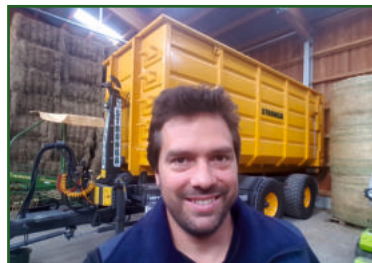
## Unparalleled Strength & Durability

We understand that your work can be difficult and it is for this reason that HookLoada trailers are built to be as tough as possible. Using top quality components and innovative manufacturing processes, you can expect a long and productive service life from your Stronga HookLoada.

## Stronga - Your Business Partner

Stronga offer a comprehensive range of models and options and stand ready to support you in selecting the optimal specification. We can also help you build-up your container fleet to deliver the very best outcomes. Real versatility across a wide range of jobs has always been a defining characteristic of HookLoada.

## Join The Family



## Ask Yourself;

Why would you purchase, operate and maintain 5 single-purpose trailers when one HookLoada trailer with matched containers will give year-round service at a significantly lower cost?



# HookLoada Concept

## OPTIMISE YOUR PROCESS

### Highly Flexible; Unlocking Potential



Stronga HookLoada trailers work to an extremely high performance level both on and off road, improving the flexibility of professional transport operations while reducing overhead costs and significantly improving profits.

### Less Fuel Less CO<sub>2</sub>

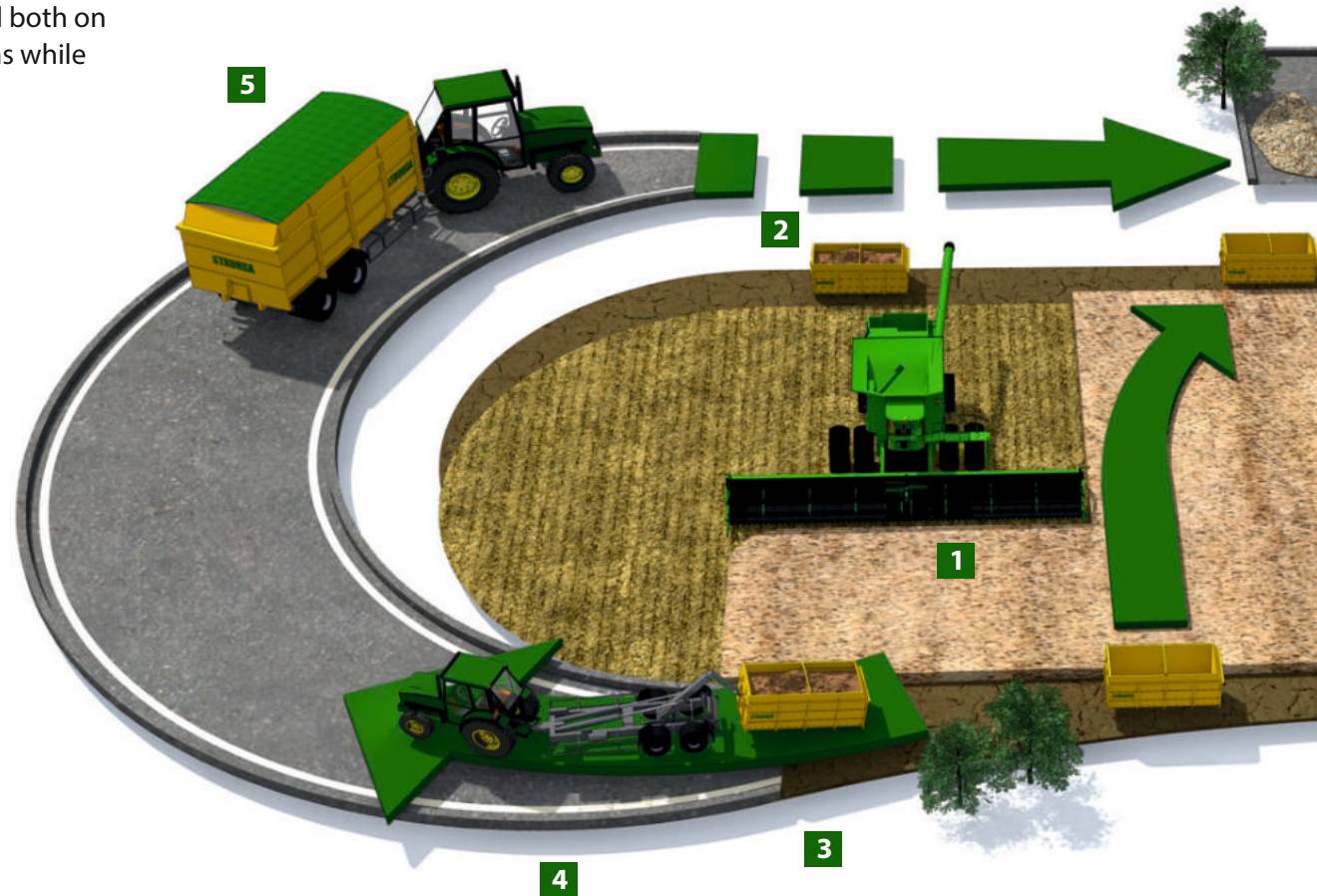
Compared to multiple conventional trailers, HookLoada offers a low fuel cost per tonne transported with container shuttling, high speed running gear, superior driving dynamics and optimised gross weights.

### Reduced Cycle Times

Ground-demounting containers enables faster and safer loading while rapidly exchanging containers reduces idle waiting time. Optional QuickLoada™ equipment speeds up cycle times even more.

### Lower Labour Costs

The HookLoada concept reduces labour hours through efficiently shuttling loaded containers; you won't have to wait during loading and this improves your overall productivity and efficiency, every single day.



1



2



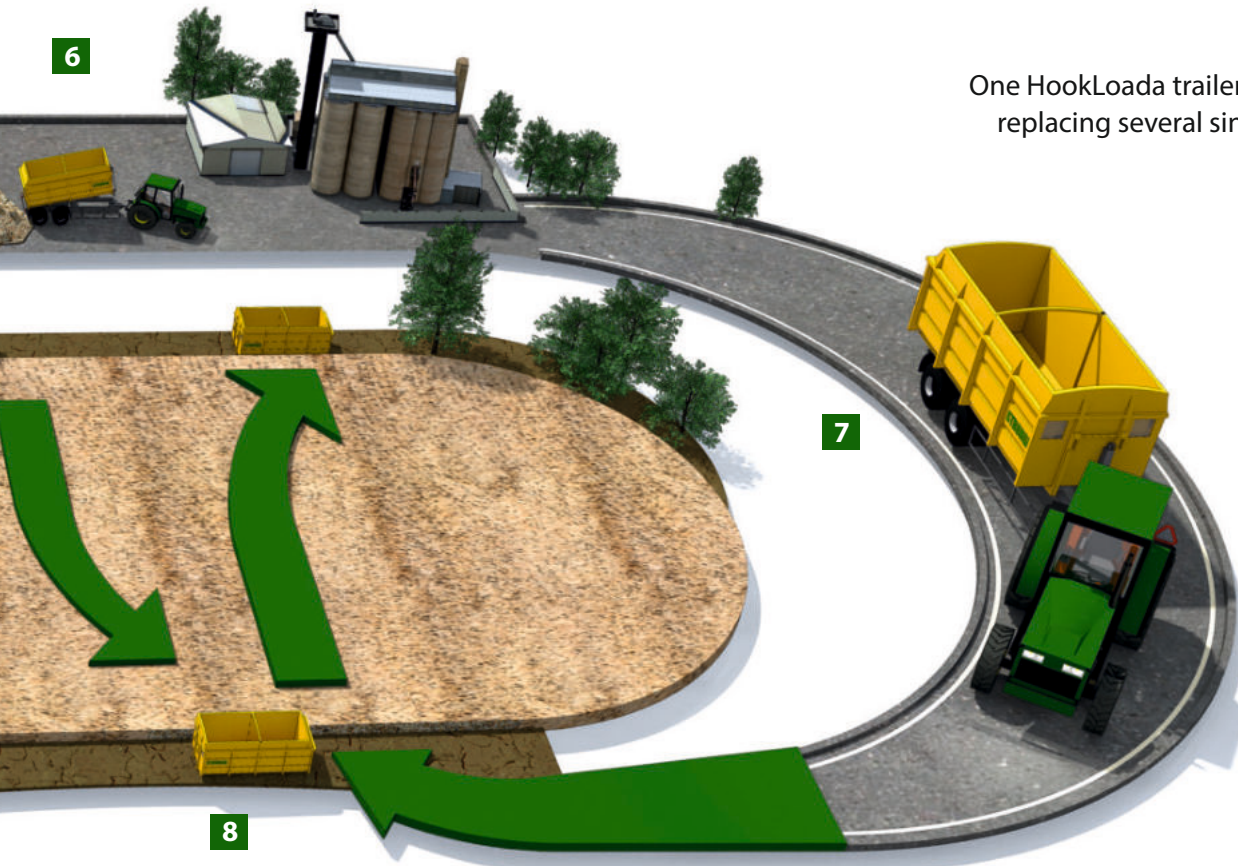
3



4







## £ Significantly Smaller Capital Outlay

One HookLoada trailer with multiple containers significantly reduces your overall capital expenditure, replacing several single-purpose trailers which each suffer depreciation and have maintenance and service costs of wearing components with the associated downtime.

## 📅 Year-Round Utility

HookLoada trailers are supremely efficient across a wide range of applications and sectors while offering exceptional added utility and reliable service throughout the whole year.

## 🚜 Fewer Tractors Required

Owning and operating one HookLoada trailer reduces the number of expensive tractors required while improved operational efficiency reduces tractor hours and depreciation.

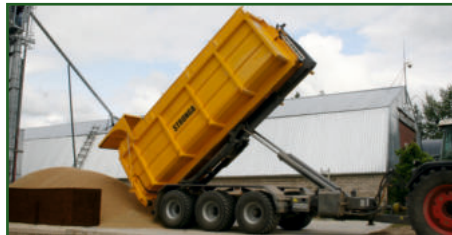
## ⚙️ Lower Maintenance Costs

Expensive maintenance costs can be minimised through operating a single high performance HookLoada transport shuttle renowned for reliability and build quality, offering long life maintenance-free service.

5



6



7



8





# HookLoada Applications

Grain Haulage 

Heavy Plant Transport 

Fuel Transport 

The impressive utility of HookLoada has simply become routine nowadays.

Nobody stares as you drop a grain container on the ground, ready for loading in the field.

Your neighbour doesn't even take notice when you switch between using a vacuum tank one minute and a heavy material dump container the next.

In fact, some people who own HookLoada don't even think that driving heavy plant onto a ground-demounted flatbed is worth yelling about.

That's because once you get used to HookLoada, you don't even think about its breath-taking abilities anymore.

Except, that is, when you reflect on a productive day, considering the vast scope of your achievements.

Or when you listen to your neighbour complain about the maintenance costs and downtime on his multiple trailers.

Or when you fall asleep dreaming of the new possibilities ahead using your supremely capable, multi-purpose HookLoada.

Discover photographs from our customer's showing the versatility of their HookLoada equipment across sectors and seasons.

Imagine; where could HookLoada take you?



The HookLoada trailer is well-proven through decades of hard-graft across multiple sectors;

Agriculture 

Construction 



Manure Haulage 

Timber Forwarding 

Waste Compaction 

Dust Suppression 

& more...

# STRONGA



Forestry 

Waste Management 

Landscaping 

Utilities 

Horticulture 

& more...



# HookLoada **Highlights**

RE-THINK  
**EFFICIENCY**

## Highest Strength Steels **HARDOX®**

Extensive use of Weldox and Hardox wear-plates in high stress areas of the chassis and hook tower maximises payload, strength and service life longevity while minimising tare weight.

## Optimised High Tipping Angles

HookLoada is engineered to perfection with class-leading high tipping angles, optimising material ejection for excellent emptying and heaping ability.

## Powerful Tele-Hook Tower

Powerful telescopic crane technology is manufactured with Hardox 450 and super hard polymer slides for excellent reliability while lifting the heaviest loads.

## Accepting Bigger Capacity Containers

HookLoada accepts bigger load containers than other trailers in the market; this enables improved efficiency through maximising m<sup>3</sup> bulk capacity, every single load.

## Capable by Nature - On & Off-Road

HookLoada easily handles extreme terrains and confidently takes you from high speed road ability to wet, boggy farm land, steep mountains and other challenging off-road environments.

## Container Storage & Processing Capacity

Fleets of hook-lift containers can be used to increase storage capacity while bespoke units can handle special applications such as chilling vegetables, drying wood chips, spreading manure and so much more.







## Market-Leading Radial Tyre Brands

HookLoada comes fitted as standard with leading-brand radial tyres - Nokian, Michelin or Bandenmarkt. HookLoada tyres offer low ground pressure, high speed and load capability and excellent self-cleaning properties.



## Ultra-Low Roller Height

HookLoada's impressively low roller height provides exceptional driving stability on surfaces that dip and crest and have bad camber while safety during tipping and loading cycles is significantly improved.



## Great Undercarriage Suspension Options

Ride height control and driver comfort are optimised over rough terrain with well-developed undercarriage options including air suspension, hydraulic suspension and more.



## Smoothest Operator Ride Comfort

Wide leaf or hydraulic drawbars, air suspension options and excellent weight balance down the chassis deliver the smoothest possible ride comfort, minimising shock loads on the tractor.



## Well-Proven, Super-Durable Equipment

Made using the most durable components, the highly reliable, super long life HookLoada design is extremely well-proven across multiple decades of hard work in challenging environments.

1



## Leading Brands – Less Servicing – More Service

Market-leading component quality maximises uptime, optimises productivity and minimises servicing costs. Stronga only work with top-level brands in the design of HookLoada - BPW, Hardox, Michelin, Nokian and more.





# HookLoada vs. The Other Guys



## Stronga-Made

### DIFFERENCE #1

HookLoada is 100% Stronga-made equipment. That means every HookLoada trailer is a product of our passion to produce world-class transport solutions bringing greater working efficiency. We energetically strive to work together with our loyal customers and always take responsibility for our successes and failures.

## Power & Speed

### DIFFERENCE #2

Large modern operations call for intelligently applied power to maximise uptime while reducing operating costs. When coupled with high speed ability, the enormous lifting and tipping power of HookLoada increases your operating capacity while reducing fuel usage, maintenance costs and operator hours.

## Professional Solutions

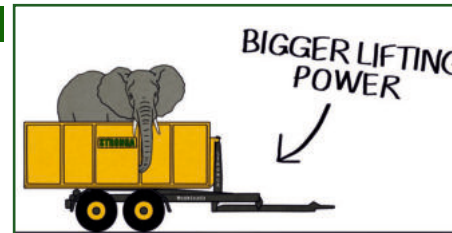
### DIFFERENCE #3

Each model in the HookLoada range is built using only top-level components - BPW axles, Michelin tyres, super-bright LED lighting systems and much more quality throughout. What's more, supreme welding and high quality paint finish all contribute to a sound investment - a trailer which will hold its value over many years of hard-graft.

1



2



3





## DIFFERENCE #4

### High Cubic Capacity

With a revolutionary chassis designed to optimise container length, we believe we are taking positive steps in achieving our goal of optimising bulk loading capacity, every single load. Extra-long tele-hook tower stroke enables loading of even longer containers for new levels of improvement in efficiency.

## DIFFERENCE #5

### Elegant Geometry

The combination of elegant chassis geometry together with hydraulic suspension and hydraulic drawbar options minimises the uploading angle, reducing power required to pick-up containers. With a low centre of gravity, HookLoada delivers better cornering stability and increased output because higher bulk containers can be handled.

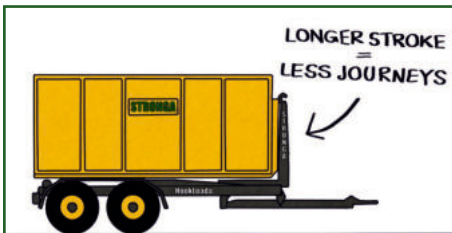
## DIFFERENCE #6

### Extra-Strong Design

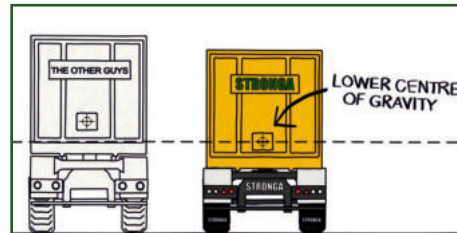
Through using extra-strong Hardox and Weldox steels in high stress areas of the HookLoada trailer, our design team have been able to reduce overall tare weight while increasing durability and maximising service life. Highly durable, long life HookLoada structures offer the lowest cost of ownership with exceptional resale value.



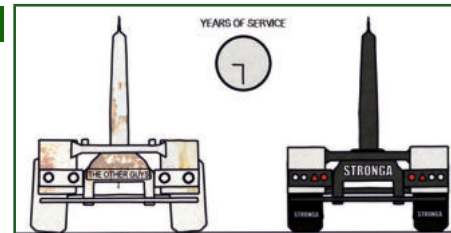
4



5



6





# HookLoada User Reviews

## Mayo County Council, Ireland

We got to know about Stronga and their HookLoada trailer for the first time in 2008, the year in which we ordered our first Stronga hook-lift. Over the years we have really noticed the strength and quality of the HookLoada. We have been using it on our landfill site for 11 years and have been extremely happy with the reliability of the equipment. We are also extremely pleased that you can work the trailer from the back end of the tractor hydraulics with no need for a second hydraulic pump. This was a major plus for our operation. Quality, reliability and ease of operation have been major benefits to us.

In late 2019 we decided to change our trusty HookLoada as it was getting older; we headed back to Stronga for a replacement. After back and forth chat about which model to choose, we decided that the HL180C model was best-suited to our operation. We received the HL180C HookLoada in early 2020 and we are very happy with our purchase. More improvements were made to the design since our 2008 model to make it even more user-friendly. I would have no hesitation in recommending Stronga for their professionalism and also in recommending their HookLoada to anyone who needs highly reliable transport equipment for their business.



"I would have no hesitation in recommending Stronga for their professionalism and also in recommending their HookLoada trailer to anyone who needs highly reliable equipment for their business"

Mr. G. Bourke,  
Mayo County Council



GET THE JOB  
DONE



## WHAT THEY SAY



“Stronga offered the best small-scale hook-lift in the market with its strong, robust and super compact design”

Mr. F. Grund,  
E-F-K Erdbau, Forst und Kommunalarbeiten

### E-F-K Erdbau, Forst und Kommunalarbeiten, Austria

We run a relatively small agricultural contracting business in Tyrol - a western Austrian state in the Alps. We have owned and operated a Stronga HL014 HookLoada trailer as part of our modest fleet for just over a year now. After a long and comprehensive search during which we looked at around 8 different manufacturers of hook-lift trailers, it quickly became clear to us that Stronga offered the best small-scale hook-lift trailers, it quickly became clear to us that Stronga offered the best small-scale hook-lift in the market with its strong, robust and super compact design.

After using our HookLoada HL014 trailer day-in day-out for more than a year now, we already know that we will be investing in another hook-lift in the very near-future and the new one will definitely be supplied by Stronga again.



E-F-K Erdbau, Forst und  
Kommunalarbeiten

Mayo  
County Council





# HookLoada **Technical Information**







MODEL	HL012D	HL014D	HL140D**	HL160DT	HL180DT	HL210DT	HL211DT	HL250DT	HL260DT	HL300DT
Gross weight	16000kg	18000kg	18000kg	20000kg	22000kg	22000kg	22000kg	31000kg	31000kg	34000kg
Tare weight	Ca. 3000kg	Ca. 3500kg	Ca. 4000kg	Ca. 4500kg	Ca. 5000kg	Ca. 5500kg	Ca. 5250kg	Ca. 6900kg	Ca. 7200kg	Ca. 8000kg
Max hooking load	12000kg	14000kg	14000kg	16000kg	18000kg	21000kg	21000kg	25000kg	26000kg	30000kg
Max tipping load	12000kg	14000kg	14000kg	16000kg	18000kg	21000kg	21000kg	25000kg	26000kg	30000kg
Drawbar load	3000 (4000kg*)	3000 (4000kg*)	3000 (4000kg*)	3000 (4000kg*)	3000 (4000kg*)	3000 (4000kg*)	3000 (4000kg*)	3000 (4000kg*)	3000 (4000kg*)	3000 (4000kg*)
Hook height	1570mm	1570mm	1570mm	1570mm	1570mm	1570mm	1570mm	1570mm	1570mm	1570mm
Hook tower	Tiltable	Tiltable	Tiltable**	Telescopic	Telescopic	Telescopic	Telescopic	Telescopic	Telescopic	Telescopic
Hook stroke	-	-	-	1100mm	1100mm	1200mm	1100mm	1200mm	1200mm	1500mm
Suspension capacity	14000kg	14000kg	21000kg	21000kg	21000kg	21000kg	21000kg	31500kg	36000kg	48000kg
Main cylinders	1 unit	1 unit	2 units	2 units	2 units	2 units	2 units	2 units	2 units	2 units
Oil requirement	10 litres	12.5 litres	14 litres	18 litres	20 litres	25.5 litres	22.5 litres	Own hydraulic	Own hydraulic	Own hydraulic
Min draft requirement	100HP	100HP	100HP	110HP	120HP	140HP	140HP	200HP	200HP	200HP
Hydraulic pressure req.	200 bar	200 bar	200 bar	200 bar	200 bar	200 bar	200 bar	270 bar	270 bar	270 bar
Total length	5900mm	6400mm	6510mm	6980mm	7620mm	7930mm	7620mm	8260mm	8830mm	9350mm
Max width (std. Wheels)	2550mm	2550mm	2550mm	2550mm	2550mm	2550mm	2550mm	2710mm	2710mm	2710mm
Standard wheels	455/40 R22.5	560/45 R22.5	455/40 R22.5	560/45 R22.5	560/45 R22.5	560/60 R22.5	560/60 R22.5	560/60 R22.5	560/60 R22.5	560/60 R22.5
Connections to tractor	3X double acting	3X double acting	3X double acting	3X double acting	3X double acting	3X double acting	3X double acting	-	-	-

The information shown in this brochure is representative of a "DIN Standard" HookLoad. Specifications and dimensions may vary depending on the customer's local market preferences and regional laws. Specification, weights and payload may vary on fast tow models. As we are continually improving our products, technical details, masses and measurements are given as reference values only.

\* 4000kg with K-80 ball towing hitch.

\*\* The HL140 model is also available with a telescopic hook tower. This brochure shows the tiltable hook tower version.



# HookLoada HL012



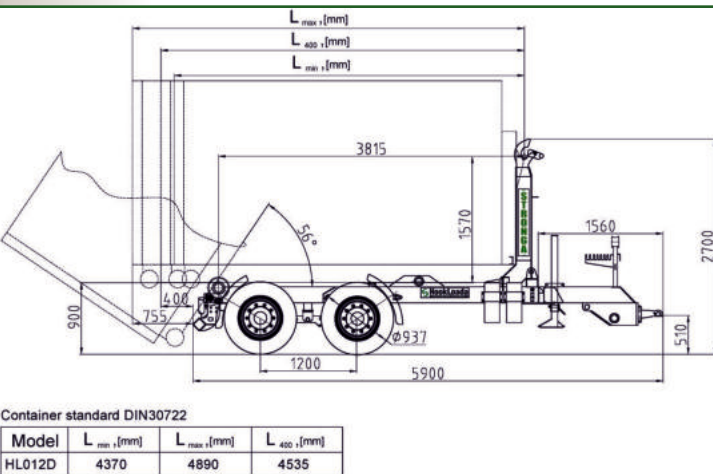
Tilt-Tower Range





www.stronga.com

# STRONGA



## Mini & Mighty 12 Tonne Hookloada

The compact HL012 HookLoada is a professional small-scale trailer equipped with the same great specification as the bigger models in the line-up. Compared to other solutions in the market offering similar tipping and lifting capabilities, the HL012 model has class-leading standard features with a wide range of well-developed options available to suit your needs. Discover the key features of the 12 tonne HookLoada:

Oversized chassis construction; Quality BPW commercial axles; Full sprung suspension as standard; Big professional wheel & tyre mountings; Wonderfully low roller height of only 900mm (depending on tyre choice); Manoeuvrable in tight spaces; Unique hook tower, auto-changing between tipping & offloading cycles; Super high 56° tipping angle; Durable metallic paint finish; Great range of options & more...

### Key Features...



- Extremely low roller height of only **900mm**.
- Extremely low container pick-up angle
  - Excellent stability



- Excellent high tipping angle of up to **56°**.
- High material heaping
  - Clean emptying of even sticky materials



- Container length – 4370 - 4890mm. Optimum length – **4535mm**.
- Mini HookLoada with mighty capacity



- Automatic tipping and unloading cycle.
- Unique self-protecting, auto-latching hook tower feature

This datasheet is representative of a "DIN Standard" HookLoada trailer. Specifications and dimensions may vary depending on the customer's local market preferences and regional laws. Specification, weights and payload may vary on fast tow models.

### HookLoada HL012 - Popular Options In-Focus

Customers opting for the HL012 model often choose these popular optional upgrades:

- STR-903 - Hard plastic quarter mudguards, front and rear.
- STR-1000 - Premium-quality, lockable steel toolbox. Various sizes available.
- STR-1037 - Twin LED adjustable working lights; super-bright, premium-quality lights.



Please refer to pages 38-41 for the full list of HookLoada options.



# HookLoada HL014



*Tilt-Tower Range*





www.stronga.com

# STRONGA

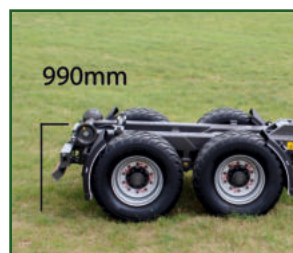


## Born Tough. Made Professional.

HookLoada HL014 is tough enough for continuous contractor use, compact enough for small yards and nimble enough for tight corners. The HL014 model offers all the versatility and reliability you need on smaller-scale jobs, and it offers fantastic value. The 14 tonne tilt-tower HookLoada is well-suited to tractors from 80-140HP. Containers up to 5340mm long (optimum - 4950mm) can be tipped to a leading 56° angle for superb heaping.

Alongside an array of class-leading components, HL014 comes fitted as standard with a fully automatic frame locking system which optimises safety when tipping and offloading containers. This feature is particularly important when handling short containers. In total, the 14 tonne Stronga HookLoada is proving to be an extremely useful smaller-scale transport solution for use across a wide range of materials, sectors and seasons.

### Key Features...



990mm

Very low roller height of just **990mm.**

- Low container height
- Excellent stability



56°

Excellent high tipping angle – **56°.**

- Clean material ejection
- Excellent heaping ability



4950mm

Container length – 4730 – 5340mm. Optimum length – **4950mm.**

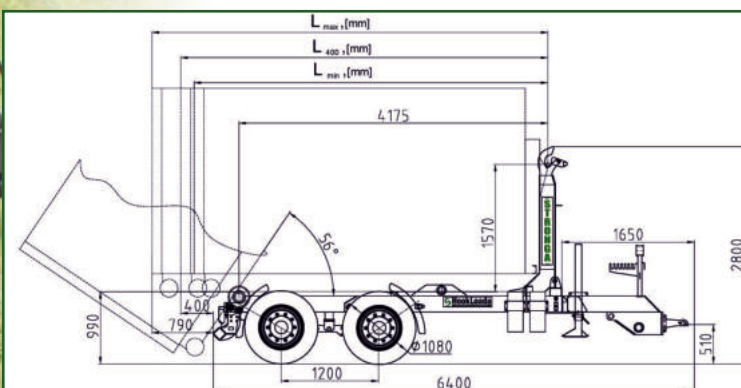
- Useful container length



4175mm

Length from tower to rear roller – **4175mm.**

- Highly manoeuvrable in confined spaces



Container standard DIN30722

Model	L <sub>min</sub> (mm)	L <sub>max</sub> (mm)	L <sub>4950</sub> (mm)
HL014D	4730	5340	4950

This datasheet is representative of a "DIN Standard" HookLoada trailer. Specifications and dimensions may vary depending on the customer's local market preferences and regional laws. Specification, weights and payload may vary on fast tow models. Please visit stronga.com for full technical specifications and videos of the HL014 model.

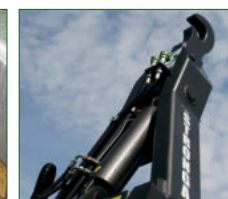
### HookLoada HL014 - Popular Options In-Focus

Customers opting for the HL014 model often choose these popular optional upgrades:

STR-703 - Hydraulic rear axle stabilisers.

STR-710 - Auxiliary connections with changeover valve on the hook tower.

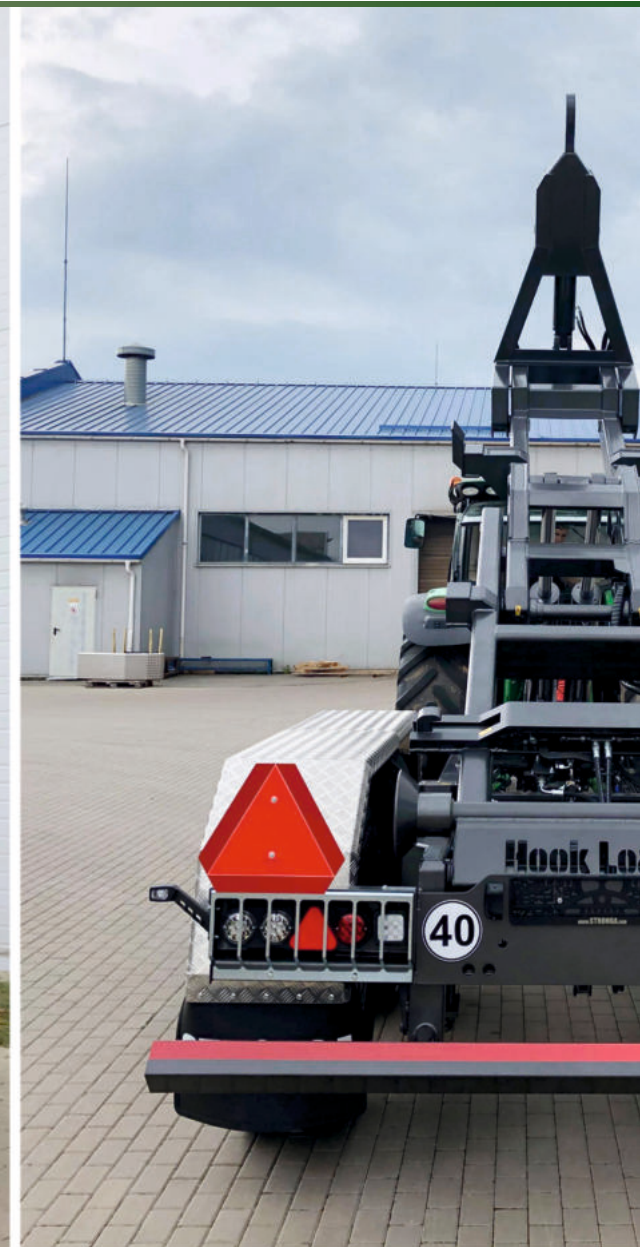
STR-900 - Full length, ultra-light aluminium mudguards.



Please refer to pages 38-41 for the full list of HookLoada options.



# HookLoada HL140



Tilt-Tower Range





www.stronga.com

# STRONGA

## Proven Reliability – The HL140 Model

HookLoada HL140 is resilient, robust and extremely well proven across a wide range of small-to-medium size transport and handling applications. Suited to tractors from 80-140HP, the popular HL140 model shuttles 5070mm long containers (optimum length) at high speed, increasing efficiency and productivity on a daily basis.

For customers wanting a trailer offering the combination of excellent manoeuvrability, impressive reliability and a medium lifting capacity, the HL140 model is the perfect solution for your business. Using a well proven tilt-tower HookLoada trailer, operating costs can be better managed in terms of reducing fuel bills, maintenance costs and labour requirements per tonne of material handled. Become an innovator today. Take the lead among your peers and invest in the HL140 HookLoada trailer.

### Key Features...



- Low roller height – **1000mm.**
- Good stable platform
  - Low loading height



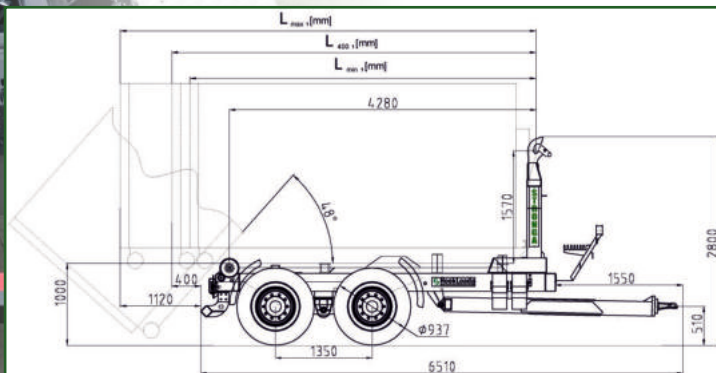
- Good tipping angle – **48°.**
- Powerful twin cylinder
  - Low oil requirement
  - Good heaping ability



- Container length – 4830 – 5800mm. Optimum length – **5070mm.**
- Compact scale



- Length from tower to rear roller – **4280mm.**
- Manoeuvrable length
  - Small turning circle



Container standard DIN30722

Model	L <sub>max</sub> (mm)	L <sub>min</sub> (mm)	L <sub>opt</sub> (mm)
HL140D	4830	5800	5070

This datasheet is representative of a “DIN Standard” HookLoada trailer. Specifications and dimensions may vary depending on the customer’s local market preferences and regional laws. Specification, weights and payload may vary on fast tow models. Please visit stronga.com for full technical specifications and videos of the HL140 model.

### HookLoada HL140 - Popular Options In-Focus

Customers opting for the HL140 model often choose these popular optional upgrades:

- STR-215 - BPW commercial axle, 410x120 brake axles, 120x120mm square beam.
- STR-304 - Load Sensing Valve (LSV) for air brakes.
- STR-1001 - Super-strong, ultra-light aluminium side protection rails.



Please refer to pages 38-41 for the full list of HookLoada options.



# HookLoada HL160



Tele-Tower Range (Tandem Axle)





www.stronga.com

# STRONGA



## Tough & Affordable Telescopic Hookloada

Stronga have earned a reputation for manufacturing the highest quality hook-lift trailers available in the market. The HL160 model offers well-proven, supremely robust design that is packed full of reliability, innovation, creativity and Stronga expertise. We have been building HookLoada trailers for decades and offer a wide range of well-proven options, allowing you a tailored solution.

The well-proven HL160 HookLoada is built to provide a fantastic standard specification, handling containers up to 6260mm in length. That's great power and exceptional potential offered by our most compact telescopic-tower HookLoada trailer. The long life standard specification comprises of commercial BPW axles, 560/45 R22.5 Nokian Country King tyres, air or hydraulic brakes, LED lights and much more...

### Key Features...



- Low roller height of only **1100mm.**
- Stable cornering profile
  - Low loading angle



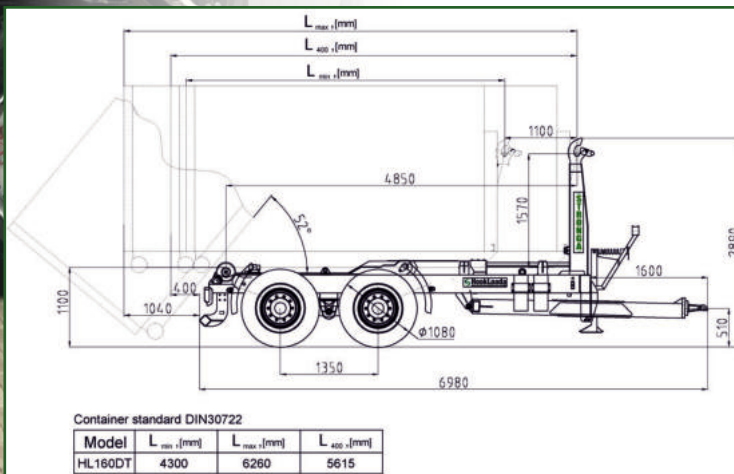
- Great tipping angle – **52°.**
- Great heaping ability
  - Clean emptying across all materials



- Container length – 4300 – 6260mm. Optimum length – **5615mm.**
- Main container market



- Length from tele-tower to rear roller – **4850mm.**
- Compact with excellent haulage capacity



This datasheet is representative of a "DIN Standard" HookLoada trailer. Specifications and dimensions may vary depending on the customer's local market preferences and regional laws. Specification, weights and payload may vary on fast tow models. Please visit stronga.com for full technical specifications and videos of the HL160 model.

### HookLoada HL160 - Popular Options In-Focus

Customers opting for the HL160 model often choose these popular optional upgrades:

- STR-307 - Automatic slack adjusters.
- STR-601 - Hydraulic support leg.
- STR-710 - Auxiliary connections with changeover valve on the hook tower.



Please refer to pages 38-41 for the full list of HookLoada options.



# HookLoada **HL180**



*Tele-Tower Range (Tandem Axle)*





www.stronga.com

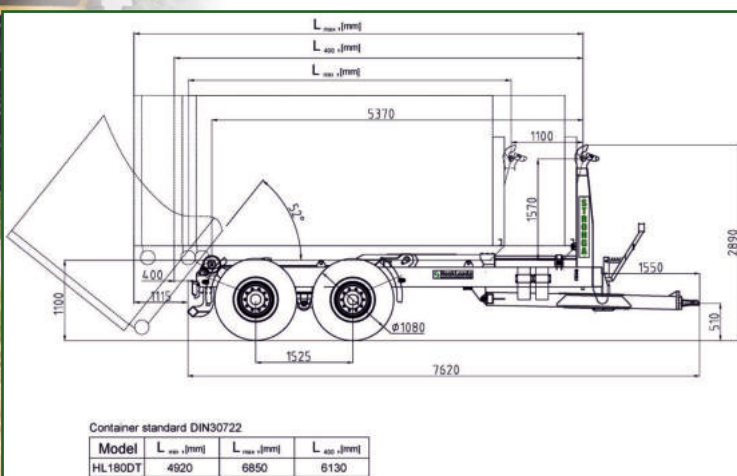
# STRONGA

## Increasingly Popular 18 Tonne Hookloada

The HL180 model is our most popular entry point in to the intermodal world of HookLoada, delivering reliability, longevity and performance like no other 18 tonne trailer available in the market. The sleek and superior HL180 HookLoada leads the tandem axle telescopic trailer market with a design that is stronger, lighter and lower than its competition; enabling greater payload at higher speeds.

Clients are typically utilising this versatile HookLoada system across a wide range of applications, seasons and sectors, including; Agriculture and farming ✓; Forestry and timber handling ✓; Waste management, transport and processing ✓; Civil engineering projects ✓; Construction work ✓; Heavy material transport ✓; Utilities ✓; Liquids transport and handling ✓; and much more...

### Key Features...



Roller height – **1100mm.**

- Low stable cornering profile
- Low loading angle



Excellent tipping angle – **52°.**

- Great heaping ability
- Clean emptying



Container length – 4920 – 6850mm. Optimum length – **6130mm.**

- Bulk capacity potential



Length from tele-tower to rear roller – **5370mm.**

- Compact with very good capacity

This datasheet is representative of a "DIN Standard" HookLoada trailer. Specifications and dimensions may vary depending on the customer's local market preferences and regional laws. Specification, weights and payload may vary on fast tow models. Please visit stronga.com for full technical specifications and videos of the HL180 model.

### HookLoada HL180 - Popular Options In-Focus

Customers opting for the HL180 model often choose these popular optional upgrades:

- STR-406 - 24t parabolic sprung suspension.
- STR-501 - Multi-position sprung drawbar.
- STR-712 - Longer hook stroke.



Please refer to pages 38-41 for the full list of HookLoada options.



# HookLoada HL210



*Tele-Tower Range (Tandem Axle)*





www.stronga.com

# STRONGA



## Ultra-Powerful; Highly Reliable.

The HL210 model is a high capacity workhorse offering 17% better payload availability than the HL180 trailer. The all-round premium-level HL210 HookLoada offer 21 tonne of lifting and tipping capability - 3 tonne bigger payload than HL180 for a small extra investment, bringing greater productivity with labour and cost savings.

HL210 offers a high duty cycle, high speed specification and high quality design-build. The world's leading tandem axle hook lift gained it's strong reputation through proven power, excellent reliability and immense performance. Operators benefit from long life reliability, leading to a low cost of ownership and high resale value. The most modern tandem axle hook lift in the market has a stronger, lighter design and the ability to accept longer and larger bulk capacity containers. Make a sound investment today in the HookLoada HL210 trailer.

### Key Features...



Low roller height of just **1200mm.**

- Lowest loading height for a 21 tonne hook-lift



Excellent tip angle – **52°.**

- Space-efficient heaping
- Slick emptying of even sticky materials



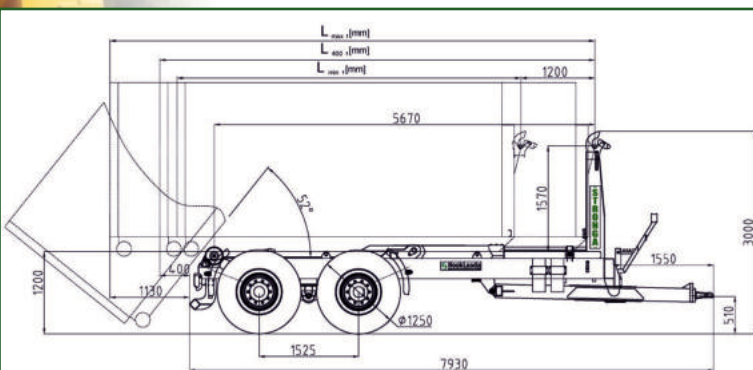
Container length – 5120 - 7220mm. Optimum length - **6480mm.**

- Extra length & capacity



Length from tele-tower to rear roller – **5670mm.**

- Accepting longer containers than HL180



Container standard DIN30722

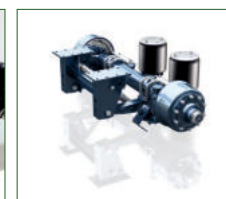
Model	L <sub>max</sub> (mm)	L <sub>min</sub> (mm)	L <sub>opt</sub> (mm)
HL210DT	5120	7220	6480

This datasheet is representative of a "DIN Standard" HookLoada trailer. Specifications and dimensions may vary depending on the customer's local market preferences and regional laws. Specification, weights and payload may vary on fast tow models. Please visit stronga.com for full technical specifications and videos of the HL210 model.

### HookLoada HL210 - Popular Options In-Focus

Customers opting for the HL210 model often choose these popular optional upgrades:

- STR-211 - BPW auto-centring free steering rear axle, 420x180 brake axle.
- STR-409 - Air suspension with height controlling valve (AirLoada™ comes as standard).
- STR-508 - Hydraulic drawbar for easy levelling and high comfort.



Please refer to pages 38-41 for the full list of HookLoada options.



# HookLoada HL211



*Tele-Tower Range (Tandem Axle)*





www.stronga.com

# STRONGA



## Compact Power – The HL211 Model

With HL211 we have delivered our most compact and high payload tandem axle telescopic tower HookLoada. The robust and reliable HL211 model is the premium workhorse for professional contractors working across intensive, high output applications.

The HL211 model offers the highest weight-to-lift ratio for a tandem-axle hook-lift trailer. Extensive use of high tensile steels in the chassis reduces weight; overall, this means more payload, more strength, more longevity and reduced fuel costs. Through the years, our talented HookLoada design team have been able to perfectly balance the design of HL211, reducing stress on key sections of the design to extend the service life even more. This really is the pinnacle of hook lift design.

### Key Features...



Roller height – **1200mm.**  
• Variable height air and hydraulic suspensions available



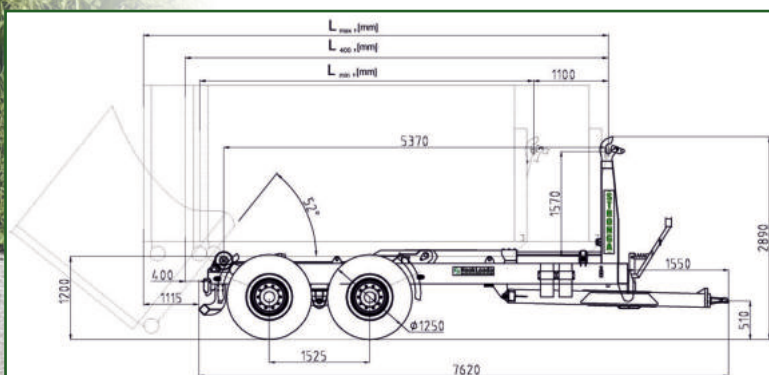
Excellent tipping angle of up to **52°.**  
• Space-efficient heaping  
• Slick load emptying



Container length – 4920 - 6900mm. Optimum length – **6130mm.**  
• Extra bulk capacity



Length from tele-tower to rear roller – **5370mm.**  
• Optimise payload with long containers



Container standard DIN30722

Model	L <sub>max</sub> (mm)	L <sub>min</sub> (mm)	L <sub>opt</sub> (mm)
HL211DT	4920	6900	6130

This datasheet is representative of a "DIN Standard" HookLoada trailer. Specifications and dimensions may vary depending on the customer's local market preferences and regional laws. Specification, weights and payload may vary on fast tow models. Please visit stronga.com for full technical specifications and videos of the HL211 model.

### HookLoada HL211 - Popular Options In-Focus

Customers opting for the HL211 model often choose these popular optional upgrades:  
STR-214 - CommandSteer™ - great manoeuvrability in reverse; free steering forwards.  
STR-407 - 32t parabolic sprung suspension, 1810mm distance between axles.  
STR-705 - 2 pipes to tractor hydraulic system; distributor operated by remote control.



Please refer to pages 38-41 for the full list of HookLoada options.



# HookLoada **HL250**



*Tele-Tower Range (Tri-Axle)*





www.stronga.com

# STRONGA



## Many Tasks. One Hero.

HookLoada HL250 is a heavy-duty trailer delivering stunning flexibility and ground-breaking efficiency in high capacity transport and handling applications. The HL250 model offers nearly 20% more payload availability than the tandem axle HL210 model. What's more, this compact tri-axle hook lift delivers low cost of operation, maximum uptime and a super high resale value. These are the things that customers tell us matter most and they are all embodied in the HL250 HookLoada trailer. Discover the benefits:

- 20% bigger payload availability than HL210 with high strength steels keeping the tare weight low.
- Reduced labour per m<sup>3</sup> of material transported with the ability to shuttle more, every single load.
- Reduced fuel and costs per m<sup>3</sup> shuttled operating a single high capacity telescopic-tower HookLoada.

## Key Features...



Roller height – **1200mm.**

- Lowest roller height for a large-scale 25 tonne hook-lift trailer



Excellent tipping angle – **52°.**

- Space-efficient heaping on smaller sites



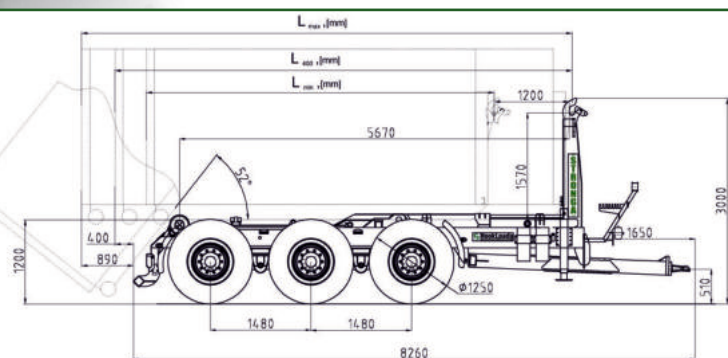
Container length – 5120 - 7220mm. Optimum length – **6730mm.**

- Bulk capacity transport



Length from tele-tower to rear roller – **5670mm.**

- Extremely well-proven hook-lift equipment



Container standard DIN30722

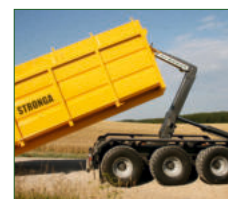
Model	L_max (mm)	L_min (mm)	L_roller (mm)
HL2500T	5120	7220	6730

This datasheet is representative of a "DIN Standard" HookLoada trailer. Specifications and dimensions may vary depending on the customer's local market preferences and regional laws. Specification, weights and payload may vary on fast tow models. Please visit stronga.com for full technical specifications and videos of the HL250 model.

## HookLoada HL250 - Popular Options In-Focus

Customers opting for the HL250 model often choose these popular optional upgrades:

- STR-713 - QuickLoada™ rapid tipping and unloading system.
- STR-727 - Danfoss PVG valve.
- STR-1005 - PowerBoosta™ cylinders, increasing tipping and uploading cycle power.



Please refer to pages 38-41 for the full list of HookLoada options.



# HookLoada **HL260**



*Tele-Tower Range (Tri-Axle)*





www.stronga.com

# STRONGA



## Mission; Scale & Efficiency

The extra-long, tri-axle HookLoada HL260 is constructed for pure power with 26 tonne of hooking potential – nearly 25% more payload capacity than the biggest tandem axle model. With a huge hooking load availability, the HL260 HookLoada sets new standards of productivity and capacity, enabling clients to make substantial savings:

- Large bulk carrying capacity, handling containers up to 7760mm long. Fewer transport cycles are required for a given volume of material while modern suspensions and tyres lower rolling resistance so less fuel is used.
- Reduced labour per tonne transported; making you more productive with your existing resources.
- Operating one large capacity HookLoada has lower costs than keeping several trailers roadworthy with tyres, suspensions, brakes and more.

## Key Features...



- Low roller height of **1250mm.**
- Lower picking up angle with longer containers



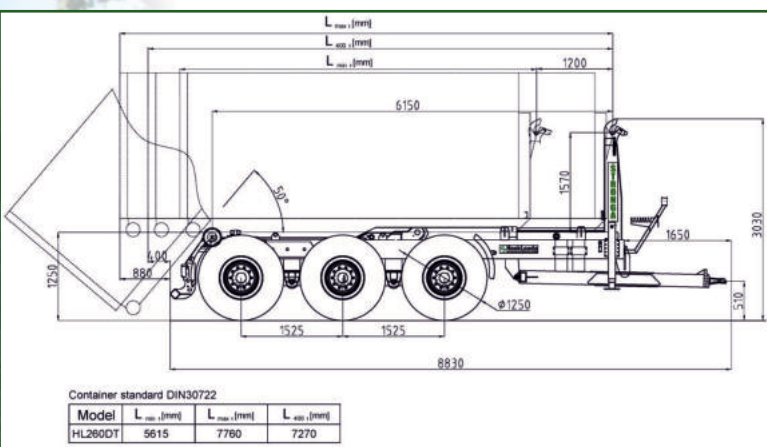
- Good tipping angle – **50°.**
- Tip long, large containers
  - Deposit materials safely at speed



- Container length – 5615 – 7760mm. Optimum length – **7270mm.**
- Bulk capacity potential



- Length from tele-tower to rear roller – **6150mm.**
- Built for serious modern transport operations

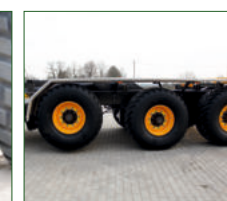


This datasheet is representative of a "DIN Standard" HookLoada trailer. Specifications and dimensions may vary depending on the customer's local market preferences and regional laws. Specification, weights and payload may vary on fast tow models. Please visit stronga.com for full technical specifications and videos of the HL260 model.

## HookLoada HL260 - Popular Options In-Focus

Customers opting for the HL260 model often choose these popular optional upgrades:

- STR-213 - Positive steering system.
- STR-410 - Hydraulic suspension for optimal axle travel.
- STR-411 - Front lift axle - only with air or hydraulic suspensions.



Please refer to pages 38-41 for the full list of HookLoada options.



# HookLoada **HL300**



Tele-Tower Range (Tri-Axle)





www.stronga.com

# STRONGA



## The Beast; 30 Tonne Hookloada

HL300 offers an unbeatable 30 tonne capacity - 20% bigger than HL250. Mega transport capacity on and off road, reducing fuel costs, saving you money whilst improving your efficiency. Modern, large-scale businesses continue to enjoy the 30 tonne lifting capability of this iconic HookLoada. Demands are growing, that's why pushing your performance further is more important than ever before. HL300 has been developed to meet customers' demands for new levels of capacity. Discover the key benefits:

- Most efficient, large-scale hook lift available in the market – 20% bigger payload than HL250.
- Container fleets can be built-up and tailored to specific business applications.
- High capacity containers can be utilised for multiple, flexible applications.

### Key Features...



1250mm

Roller height – **1250mm.**

- Low power required to pick-up heavy loads
- Excellent stability



50°

Excellent tipping angle of up to **50°.**

- High capacity material dumping ability



7640mm

Container length – 6000 - 8300mm. Optimum length – **7640mm.**

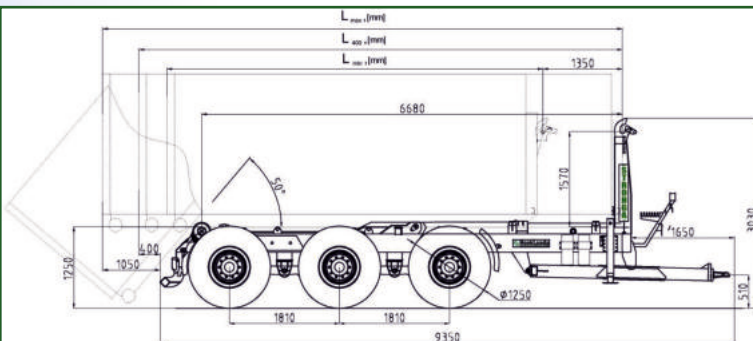
- Extra loading capacity



6680mm

Length from tele-tower to rear roller – **6680mm.**

- Ideal for high speed, large scale, modern tractors



Container standard DIN30722

Model	L <sub>con</sub> (mm)	L <sub>tot</sub> (mm)	L <sub>ax</sub> (mm)
HL3000T	6000	8300	7640

This datasheet is representative of a "DIN Standard" HookLoada trailer. Specifications and dimensions may vary depending on the customer's local market preferences and regional laws. Specification, weights and payload may vary on fast tow models. Please visit stronga.com for full technical specifications and videos of the HL300 model.

### HookLoada HL300 - Popular Options In-Focus

Customers opting for the HL300 model often choose these popular optional upgrades:

- STR-306 - EBS and ABS braking systems; RSS roll stability support.
- STR-707 - Electronic Power Steering (EPS).
- STR-718 - Wide-angle PTO cardan shaft.



Please refer to pages 38-41 for the full list of HookLoada options.



# HookLoada **Optional Equipment**

HookLoada specifications vary depending on the region. This section of the brochure is intended to give you an overview of all of the optional features that can be included on your trailer.



## **STR-210**

BPW high speed commercial axle, 410x180 brake axles, 120x120mm square beam, 10 stud.



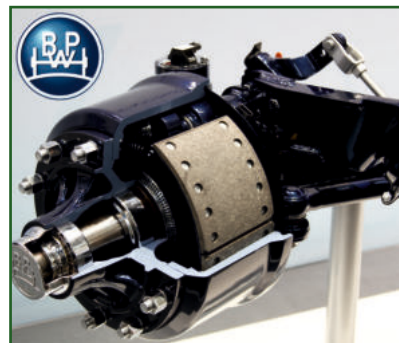
## **STR-211**

BPW auto-centring free steering rear axle, 420x180 brake axles, 120x120mm square beam.



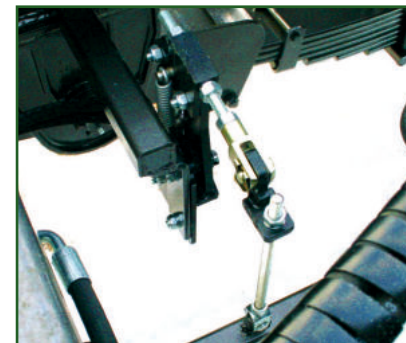
## **STR-214**

CommandSteer™ – excellent manoeuvrability in reverse – free steering travelling forwards.



## **STR-215**

BPW commercial 410x120mm brake axles, 120x120mm square beam.



## **STR-302**

Load sensing for hydraulic brakes.



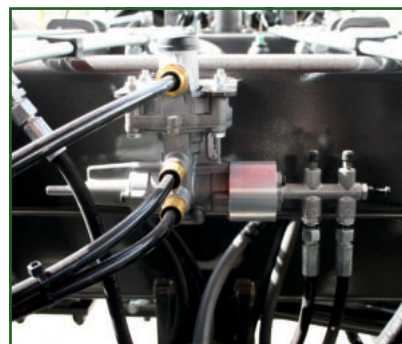
## **STR-304**

Load Sensing Valve (LSV) for air brakes.



## **STR-305**

Dual air and hydraulic brake system.



## **STR-308**

Load Sensing Valve (LSV) for hydraulic suspension.



## **STR-406**

24t parabolic sprung suspension, 1810mm distance between axles.



## **STR-407**

32t parabolic sprung suspension, 1810mm distance between axles.

## Optional Equipment Also Available...

STR-213 - Positive steering system.

STR-303 - WABCO air brakes on all wheels of the HookLoada trailer.

STR-306 - EBS and ABS braking systems; RSS roll stability support (STR-304 not required).

STR-307 - Automatic slack adjusters.





Some options are only available on specific models, whereas others are available throughout the HookLoada range.

Please contact your local sales department for more information or visit [www.stronga.com](http://www.stronga.com).

[www.stronga.com](http://www.stronga.com)

# STRONGA



## STR-409

Air suspension with height controlling valve. *AirLoada™ comes as standard when you buy STR-409.*



## STR-410

Hydraulic suspension for optimal axle travel. Developed for heavier applications, both on and off-road.



## STR-411

Front lift axle - Only available with air or hydraulic suspensions.



## STR-501

Multi-position sprung drawbar for high comfort at speed.



## STR-505

Bolt-on ball towing hitch, Scharmüller type, 80mm diameter.



## STR-506

Bolt-on swivel towing hitch, Scharmüller type. 50mm diameter eyelet.



## STR-508

Hydraulic drawbar for easy levelling and high comfort.



## STR-601

Hydraulic support leg. *Other legs available - manual telescopic, manual geared or suspended shoe.*



## STR-700

Auxiliary hydraulic connections with changeover valve at the rear of the trailer.



## STR-701

Hydraulic container locking clamps.

## Optional Equipment Also Available...

STR-309 - Smart-board from WABCO. Only available with STR-306.

STR-310 - Tri-stop cylinder for one axle; spring loaded brake (hand-brake not required).

STR-509 - Hydraulic steering drawbar.

STR-715 - Top cylinder.





# HookLoada **Optional Equipment**

HookLoada specifications vary depending on the region. This section of the brochure is intended to give you an overview of all of the optional features that can be included on your trailer.



## **STR-704**

Independent hydraulic system with PTO, 130 l/min pump. Distributor operated by remote control.



## **STR-705**

Two pipes to the tractor hydraulic system with distributor operated by remote control.



## **STR-707**

Electronic Power Steering (EPS).



## **STR-710**

Auxiliary connections on the hook tower with changeover valve.



## **STR-712**

Longer hook stroke.



## **STR-713**

QuickLoada™ - rapid but controlled tipping and unloading system.



## **STR-723**

Auxiliary hydraulic connections with electrical changeover valve at the rear of the trailer.



## **STR-724**

Auxiliary connections with electrical changeover valve on the hook tower.



## **STR-802**

Other tyre brands and tyre sizes are available. Contact Stronga for more information.



## **STR-900**

Full-length, ultra-light aluminium mudguards.

## Optional Equipment Also Available...

STR-718 - Wide angle PTO shaft cardan.

STR-727 - Danfoss PVG valve.

STR-719 - Load Sensing on the trailer; control block with LS (only with STR-709 & STR-727).

STR-810 - Rims with et + 80mm offset. Width is 2550mm with std tyres & steering axle.





Some options are only available on specific models, whereas others are available throughout the HookLoada range.

Please contact your local sales department for more information or visit [www.stronga.com](http://www.stronga.com).

[www.stronga.com](http://www.stronga.com)

# STRONGA



## STR-903

Super-hard plastic quarter mudguards, front and rear.



## STR-1000

Premium-quality lockable steel toolbox. Various sizes available.



## STR-1001

Aluminium side protection rails - ultra-light but extra-strong.



## STR-1002

Rear towing eyelet mounting plate for VBG rear drawbar.

*\*Available for selected markets only.*



## STR-1005

PowerBoosta™ – pair of booster cylinders, increasing tipping and uploading cycle power.



## STR-1006

Hydraulically extendable, robust and reliable rear bumper.



## STR-1008

Manually extendable, extra-strong rear bumper.



## STR-1037

Two LED adjustable rear working lights. Super-bright, premium-quality lights.



## STR-1040

Two LED flashing lights, encased in secure housing at the rear of the trailer.



## STR-1056

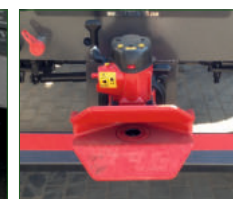
Rear real-time video camera with screen display.

## Optional Equipment Also Available...

STR-1003 - VBG-coupling; made by Stronga.

STR-1004 - Automatic rear trailer coupling D40 (STR-1002 required).

STR-1054 - Signal light positioned at the front of the frame; showing that the steering system is in the centre.





## Other **Stronga** Products

### STRONGA DumpLoada

#### Built for Rugged Performance & Reliability

The powerful, reliable, extremely durable range of square body DumpLoada trailers can transport up to 27 tonnes for excellent efficiency in heavy materials.

Each DumpLoada trailer offers maximum strength and durability in a monocoque construction to reliably transport heavy materials in quarrying, recycling and demolition industries.



Videos and further information available at <https://stronga.com/en/products/dumploada/>

### STRONGA DumpLoada HP

#### Total Reliability. Maximum Longevity.

Developed specifically for high production activities in hard-wearing environments, Stronga half pipe DumpLoada trailers keep heavy materials moving at high speeds and high volumes to lower your cost-per-tonne transported. DumpLoada HP is now more rugged, more durable and even more impressive, delivering levels of performance that go unrivalled in the market.



Videos and further information available at <https://stronga.com/en/products/dumploada-hp/>

Other Stronga Products available for viewing on [stronga.com](https://stronga.com);

TruckLoada



RoadGrada



SuperTanka





## STRONGA FlowDrya

### Continuous Flow Drying Systems

There are endless lists of wet materials that need to be dried so they can be further processed, stabilised and utilised. Stronga FlowDrya Green Series is one of the only continuous drying solutions available in the market offering the flexibility to cope with the varying properties of different wet materials and by-products such as wood chip, SRF, paper pulp, industrial hemp and more.



Videos and further information available at <https://stronga.com/en/products/flowdrya-green-series/>

## STRONGA FlowSteama

### Steam Sterilisation Solutions

Steam sterilisation can be used as a highly effective means of cleaning soils, substrates, composts, manures and growing media from fungi, harmful organisms, bacteria and weed seeds. FlowSteama can add value across a wide range of materials, including; steam "cleaning" soil, topsoil, compost, food waste, green waste, agricultural manures and much more.



Videos and further information available at <https://stronga.com/en/products/flowsteama/>

ISOLoada



FlowFeeda



Heatex



Drying Stations



&amp; more...





[www.stronga.com](http://www.stronga.com)

# STRONGA



## UK OFFICE

Stronga Ltd, Ashdene Farm, White Stubbs Lane,  
Bayford, Hertfordshire, SG13 8PZ, UK  
Tel: +44 (0)1992 519000  
Email: [info@stronga.co.uk](mailto:info@stronga.co.uk)

# [www.stronga.com](http://www.stronga.com)

Stronga reserve the right to change the specification and design of the products described  
in this literature without prior notice.

## EUROPEAN OFFICE

UAB Stronga, Šerkšnėnai km, Šerkšnėnai sen,  
Mažeikiai raj, LT-89366, Lithuania  
Tel: +370 443 42587  
Email: [sales@stronga.lt](mailto:sales@stronga.lt)